



# ISF PARTNERING

LTC Dale Kuehl

Scorpion 07

Senior Combined Arms BN Trainer

# Keys to Successful Partnering



- Attitude
- Organization
- Combined Patrolling
- Combined Targeting/Battle Rhythm
- Combined Command and Control

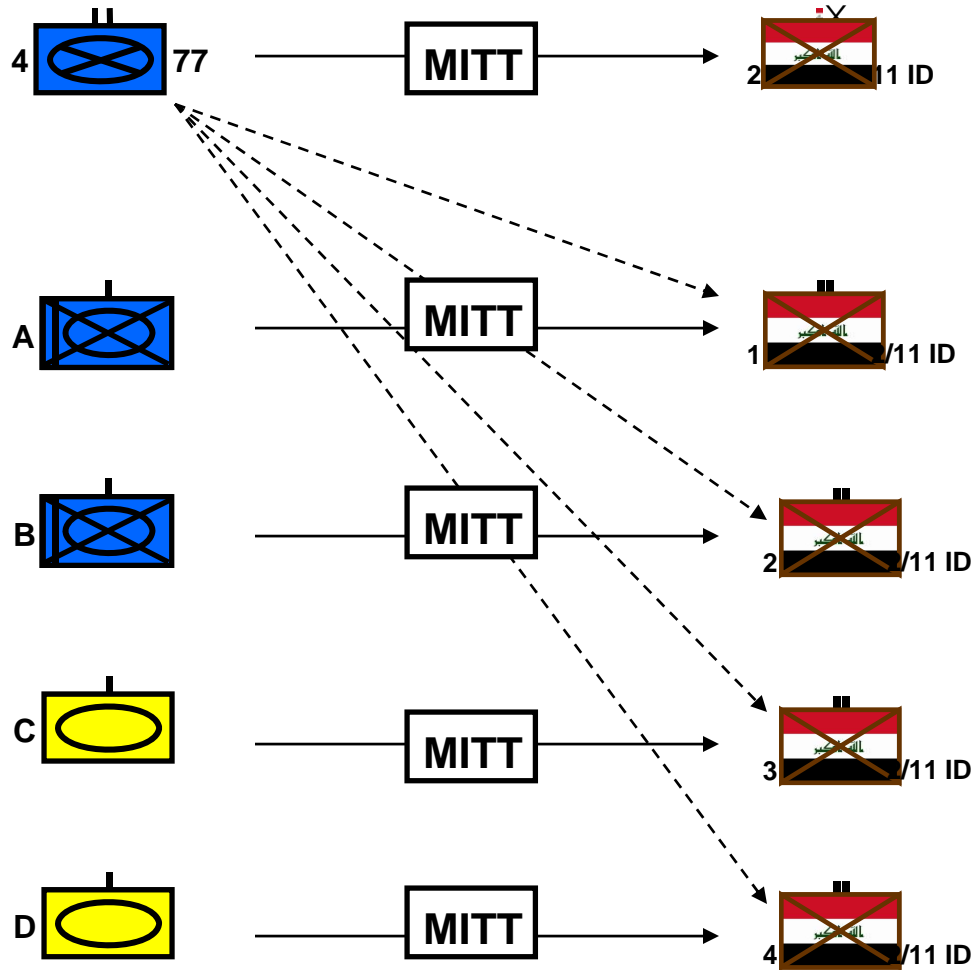


# Attitude

- Build relationships
- If you do not treat counter part with respect, they will not treat you with respect
- Hold leadership accountable
- Watch for sectarian agendas



# Organization



## BDE MITT Focus

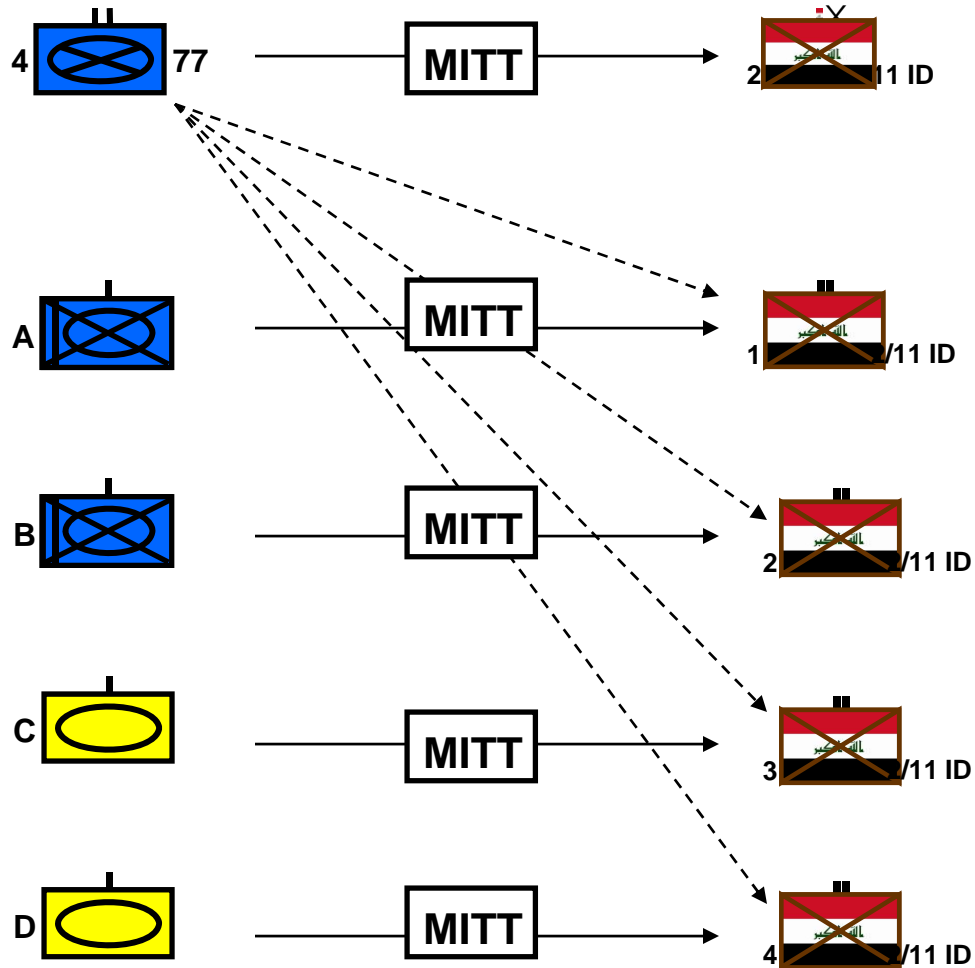
- BDE Level Focus
- Staff processes
  - Tactical
  - Admin
- Training management

## Partnership Battalion

- Training/advising BDE/BN level
- Assist in planning/execution
  - Combined battle rhythm
  - Combined targeting
  - Combined C2
  - Peer relationship w/ IA BN CDRs



# Organization



## BN MITT Focus

- BN Level Focus
- Staff processes
  - Tactical
  - Admin
- Training management

## Partnership companies

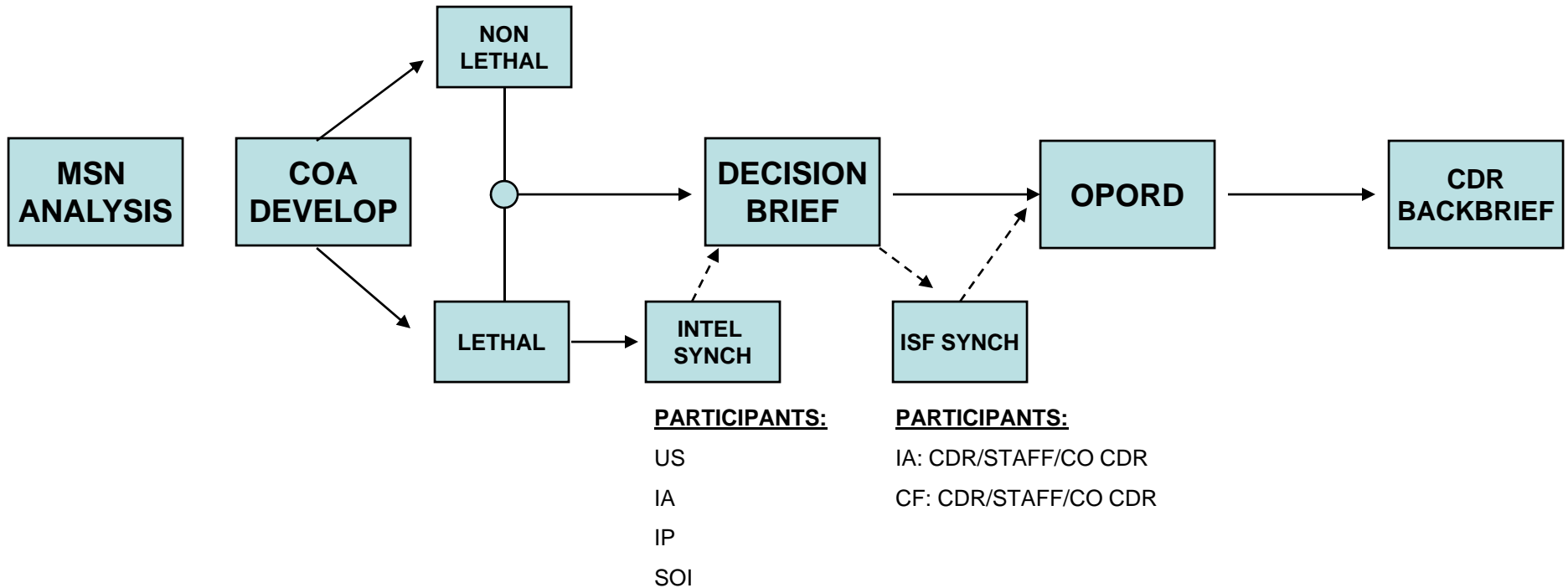
- Assist in planning/execution
- Training/advising company level and below
- Combined TLPs
- Combined patrolling
- Assist in individual/collective training

# Combined Patrolling

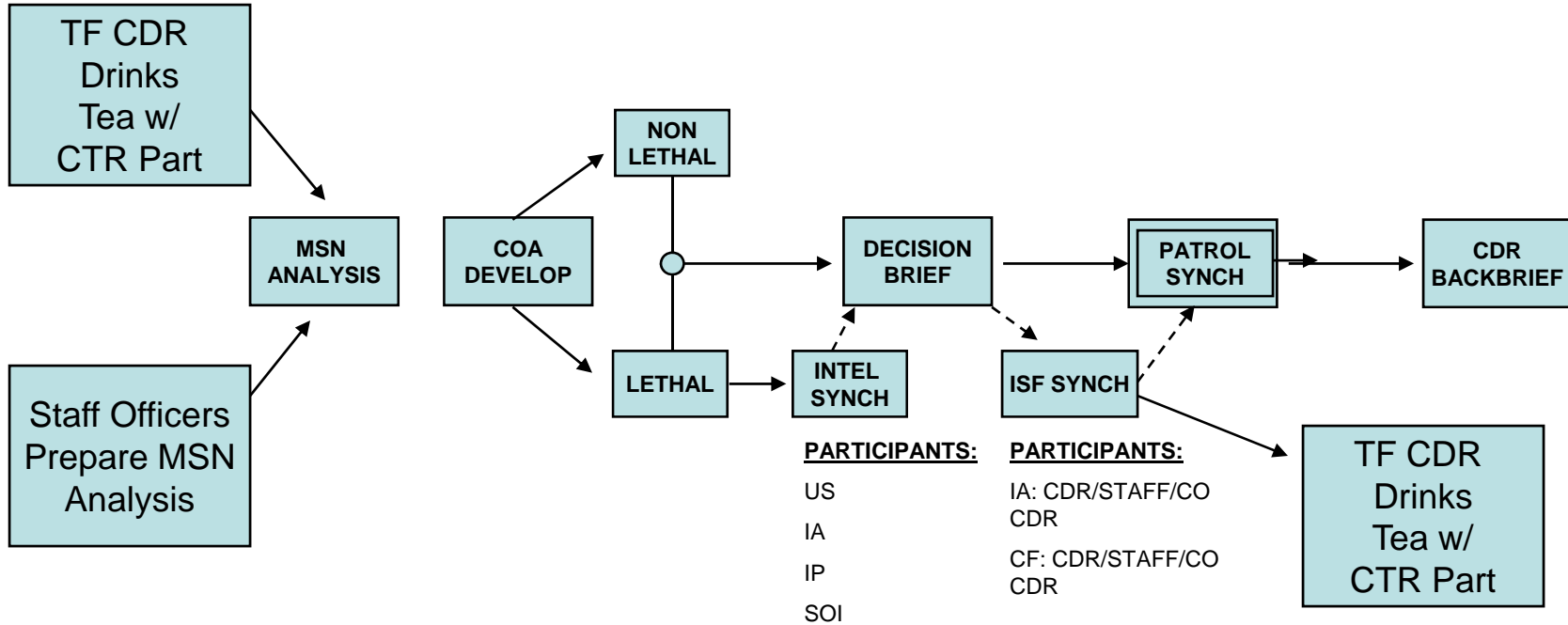


- Company commanders work out patrol schedule with counterpart BN
- Patrol leaders meet early to finalize plan
- Combined pre-brief
- Combined mission brief/OPORD
- Combined rehearsals
- Combined execution
  - Who is in charge?
  - Who gets the detainee?
  - Do not allow abuses
- Combined debrief

# COMBINED TARGETING PROCESS



# COMBINED TARGETING PROCESS





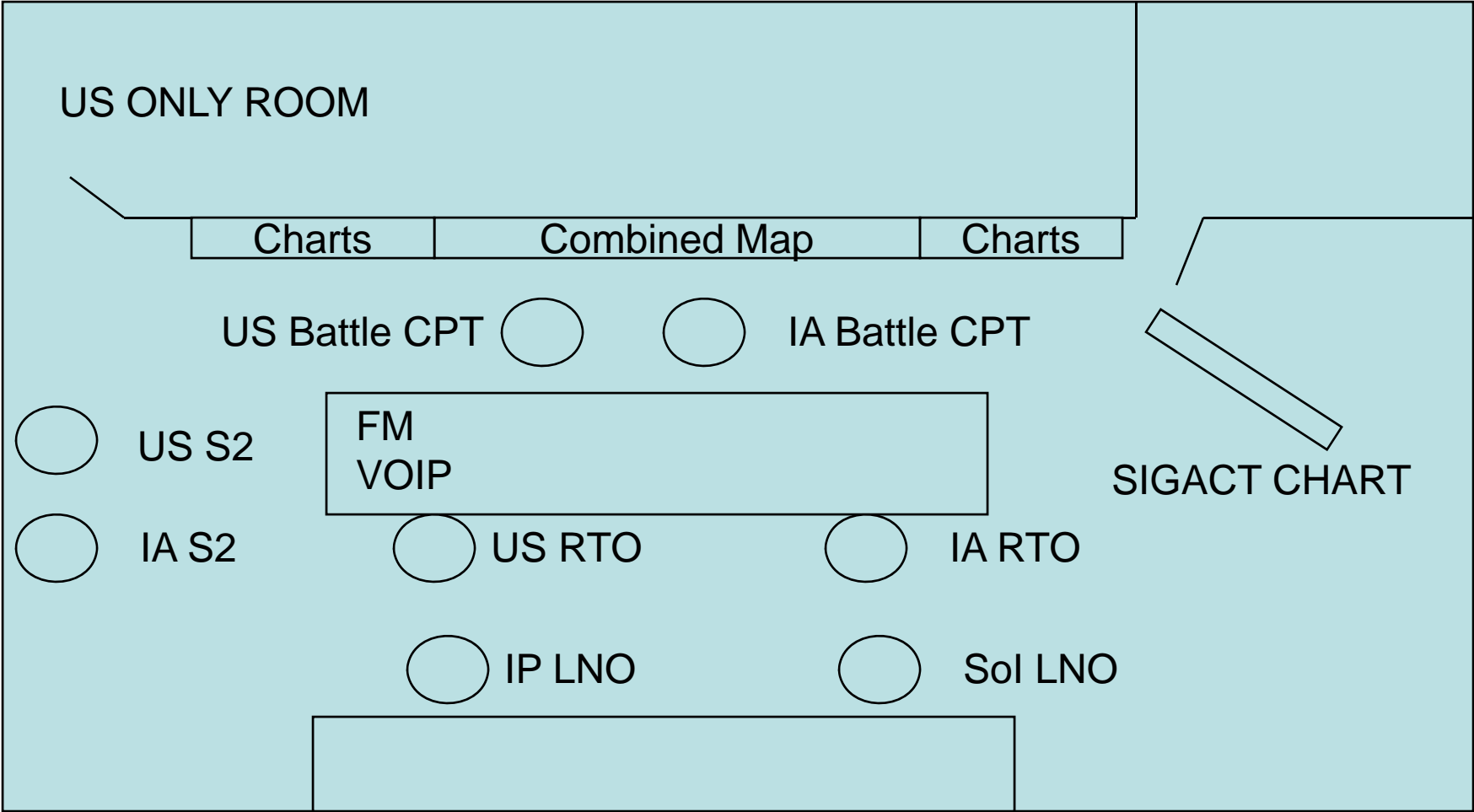


# Combined Command and Control

- Joint Security Stations
- Combined CUB
- Combined Battlefield Circulation
  - Visit JSS/COPs
  - Checkpoints
  - Key Leader Visits
  - Governmental Meetings
- Combined TF Control of C&S
- Combined IO/Consequence Management

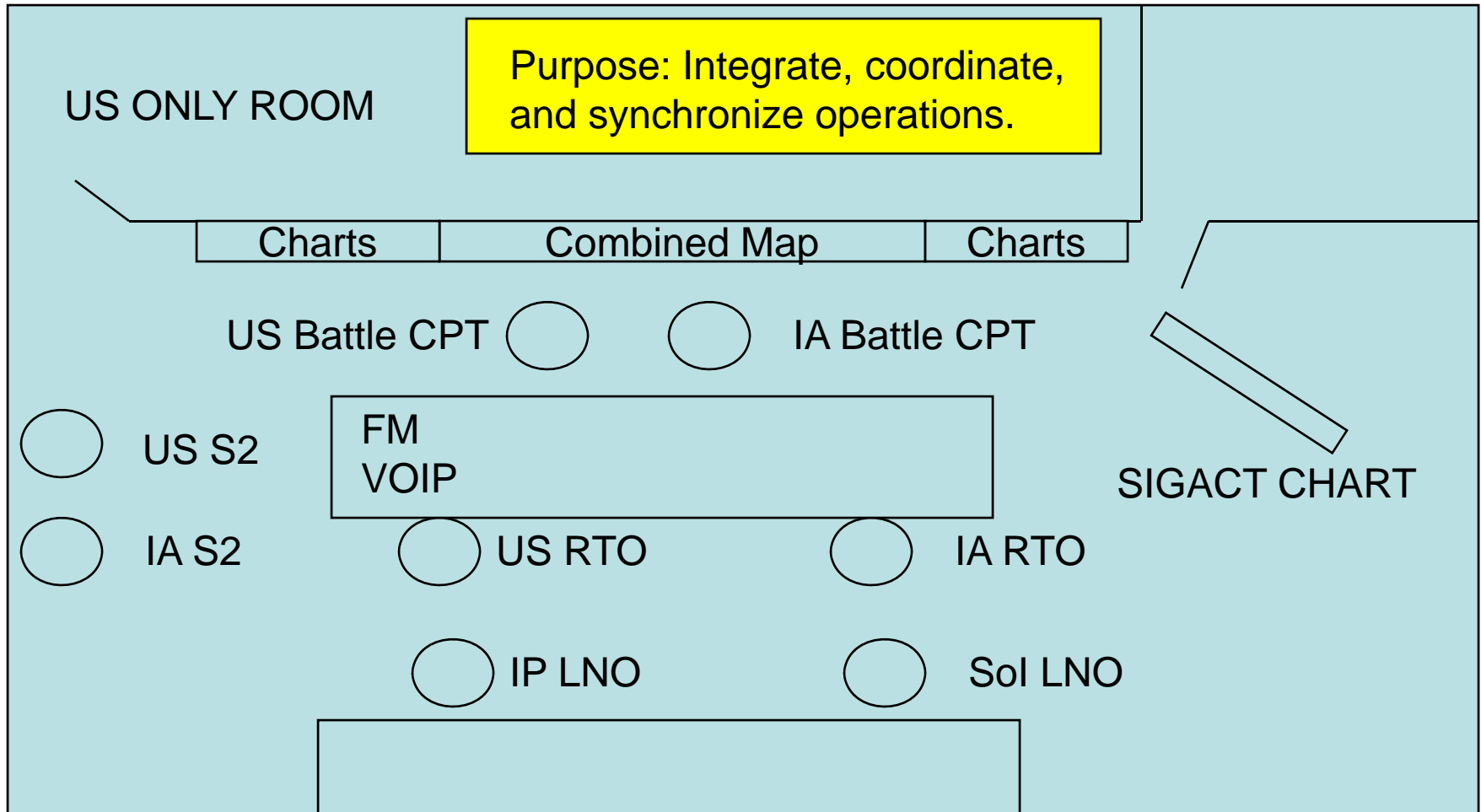


# Combined Command and Control Joint Security Station



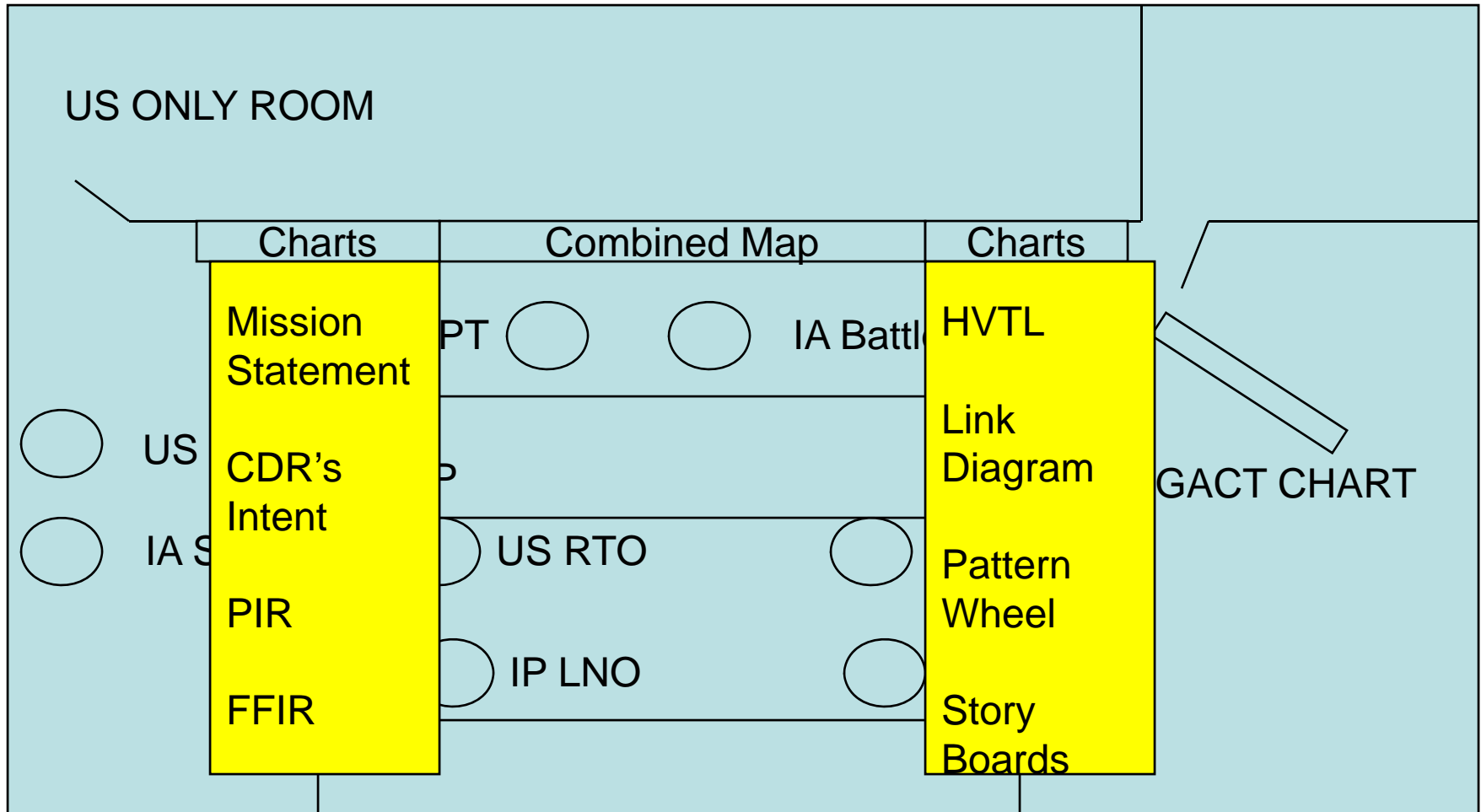


# Combined Command and Control Joint Security Station





# Combined Command and Control Joint Security Station





# Combined Command and Control

## Joint Security Station

